

Please check the examination details below before entering your candidate information

Candidate surname

Other names

Pearson Edexcel
International
Advanced Level

Centre Number

--	--	--	--	--

Candidate Number

--	--	--	--	--

Wednesday 22 January 2020

Morning (Time: 1 hour 30 minutes)

Paper Reference **WMA13/01**

Mathematics
International Advanced Level
Pure Mathematics P3

You must have:

Mathematical Formulae and Statistical Tables (Lilac), calculator

Total Marks

--

Candidates may use any calculator permitted by Pearson regulations. Calculators must not have the facility for symbolic algebra manipulation, differentiation and integration, or have retrievable mathematical formulae stored in them.

Instructions

- Use **black** ink or ball-point pen.
- If pencil is used for diagrams/sketches/graphs it must be dark (HB or B).
- **Fill in the boxes** at the top of this page with your name, centre number and candidate number.
- Answer **all** questions and ensure that your answers to parts of questions are clearly labelled.
- Answer the questions in the spaces provided – *there may be more space than you need.*
- You should show sufficient working to make your methods clear. Answers without working may not gain full credit.
- Inexact answers should be given to three significant figures unless otherwise stated.

Information

- A booklet 'Mathematical Formulae and Statistical Tables' is provided.
- There are 9 questions in this question paper. The total mark for this paper is 75.
- The marks for **each** question are shown in brackets – *use this as a guide as to how much time to spend on each question.*

Advice

- Read each question carefully before you start to answer it.
- Try to answer every question.
- Check your answers if you have time at the end.
- If you change your mind about an answer, cross it out and put your new answer and any working underneath.

Turn over ►

P60568A

©2020 Pearson Education Ltd.

1/1/1/



P 6 0 5 6 8 A 0 1 3 2



Pearson

Question 3 continued

A series of horizontal lines for writing the answer to Question 3.

(Total 5 marks)

DO NOT WRITE IN THIS AREA

DO NOT WRITE IN THIS AREA

DO NOT WRITE IN THIS AREA



P 6 0 5 6 8 A 0 9 3 2

Turn over

4. (i) $f(x) = \frac{(2x + 5)^2}{x - 3} \quad x \neq 3$

(a) Find $f'(x)$ in the form $\frac{P(x)}{Q(x)}$ where $P(x)$ and $Q(x)$ are fully factorised quadratic expressions.

(b) Hence find the range of values of x for which $f(x)$ is increasing. (6)

(ii)

$$g(x) = x\sqrt{\sin 4x} \quad 0 \leq x < \frac{\pi}{4}$$

The curve with equation $y = g(x)$ has a maximum at the point M .

Show that the x coordinate of M satisfies the equation

$$\tan 4x + kx = 0$$

where k is a constant to be found. (5)



6.

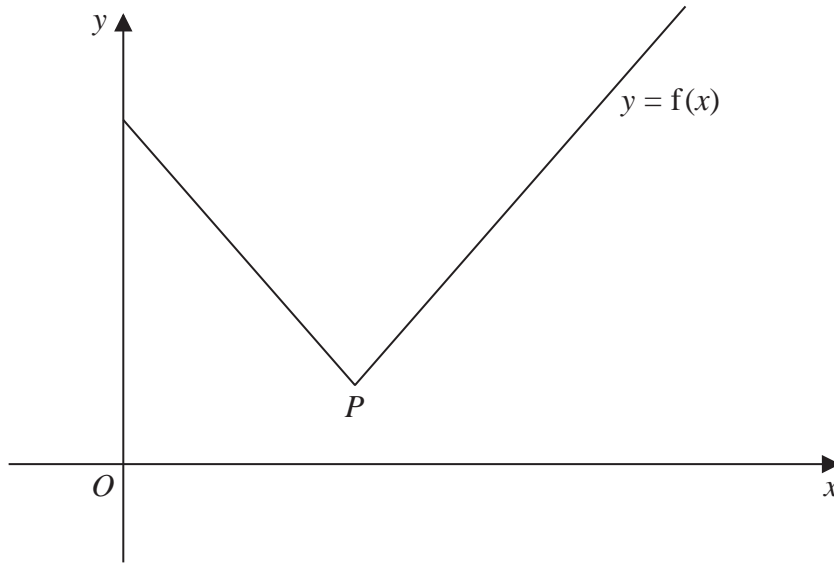


Figure 2

Figure 2 shows part of the graph with equation $y = f(x)$, where

$$f(x) = 2|2x - 5| + 3 \quad x \geq 0$$

The vertex of the graph is at point P as shown.

(a) State the coordinates of P . (2)

(b) Solve the equation $f(x) = 3x - 2$ (4)

Given that the equation

$$f(x) = kx + 2$$

where k is a constant, has exactly two roots,

(c) find the range of values of k . (3)



Leave
blank

Question 6 continued

Lined writing area with 25 horizontal lines.

DO NOT WRITE IN THIS AREA

DO NOT WRITE IN THIS AREA

DO NOT WRITE IN THIS AREA

(Total 9 marks)



7.

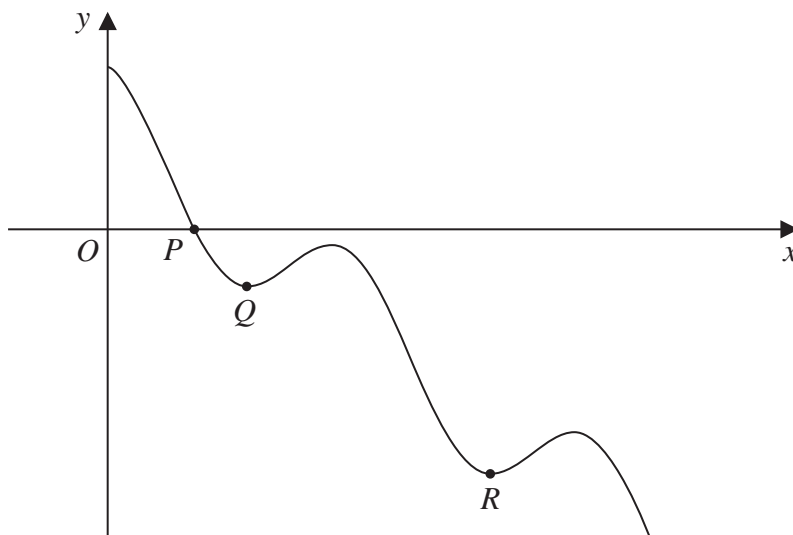


Figure 3

Figure 3 shows a sketch of part of the curve with equation

$$y = 2 \cos 3x - 3x + 4 \quad x > 0$$

where x is measured in radians.

The curve crosses the x -axis at the point P , as shown in Figure 3.

Given that the x coordinate of P is α ,

- (a) show that α lies between 0.8 and 0.9 (2)

The iteration formula

$$x_{n+1} = \frac{1}{3} \arccos(1.5x_n - 2)$$

can be used to find an approximate value for α .

- (b) Using this iteration formula with $x_1 = 0.8$ find, to 4 decimal places, the value of
- (i) x_2
 - (ii) x_5 (3)

The point Q and the point R are local minimum points on the curve, as shown in Figure 3.

Given that the x coordinates of Q and R are β and λ respectively, and that they are the two smallest values of x at which local minima occur,

- (c) find, using calculus, the exact value of β and the exact value of λ . (6)

DO NOT WRITE IN THIS AREA

DO NOT WRITE IN THIS AREA

DO NOT WRITE IN THIS AREA



Question 7 continued

DO NOT WRITE IN THIS AREA

DO NOT WRITE IN THIS AREA

DO NOT WRITE IN THIS AREA

Blank lined writing area for the answer to Question 7.



Leave
blank

Question 7 continued

DO NOT WRITE IN THIS AREA

DO NOT WRITE IN THIS AREA

DO NOT WRITE IN THIS AREA

Lined writing area with 28 horizontal lines.

(Total 11 marks)



P 6 0 5 6 8 A 0 2 5 3 2



Turn over

8. (i) Find, using algebraic integration, the exact value of

$$\int_3^{42} \frac{2}{3x-1} dx$$

giving your answer in simplest form.

(4)

(ii)
$$h(x) = \frac{2x^3 - 7x^2 + 8x + 1}{(x-1)^2} \quad x > 1$$

Given $h(x) = Ax + B + \frac{C}{(x-1)^2}$ where A, B and C are constants to be found, find

$$\int h(x) dx$$

(6)

DO NOT WRITE IN THIS AREA

DO NOT WRITE IN THIS AREA

DO NOT WRITE IN THIS AREA



Question 8 continued

Lined writing area for the answer to Question 8.

DO NOT WRITE IN THIS AREA

DO NOT WRITE IN THIS AREA

DO NOT WRITE IN THIS AREA

(Total 10 marks)



Turn over



9. $f(\theta) = 5 \cos \theta - 4 \sin \theta \quad \theta \in \mathbb{R}$

- (a) Express $f(\theta)$ in the form $R \cos(\theta + \alpha)$, where R and α are constants, $R > 0$ and $0 < \alpha < \frac{\pi}{2}$. Give the exact value of R and give the value of α , in radians, to 3 decimal places. (3)

The curve with equation $y = \cos \theta$ is transformed onto the curve with equation $y = f(\theta)$ by a sequence of two transformations.

Given that the first transformation is a stretch and the second a translation,

- (b) (i) describe fully the transformation that is a stretch,
 (ii) describe fully the transformation that is a translation. (2)

Given

$$g(\theta) = \frac{90}{4 + (f(\theta))^2} \quad \theta \in \mathbb{R}$$

- (c) find the range of g . (2)

DO NOT WRITE IN THIS AREA

DO NOT WRITE IN THIS AREA

DO NOT WRITE IN THIS AREA



